

Dark Forest 5, Oil on canvas, 62x48 inches, 2008



PAYSON R. STEVENS

Village Ghyagi, Kullu Valley
Himachal Pradesh, India
+91-1903-227109

PO Box 810
Del Mar, CA 92014
858-755-2354

www.energylandscapes.com
payson.stevens@gmail.com

© 2008-09, Payson R. Stevens



Dark Forest 11, Oil on canvas,
42x42 inches, 2008

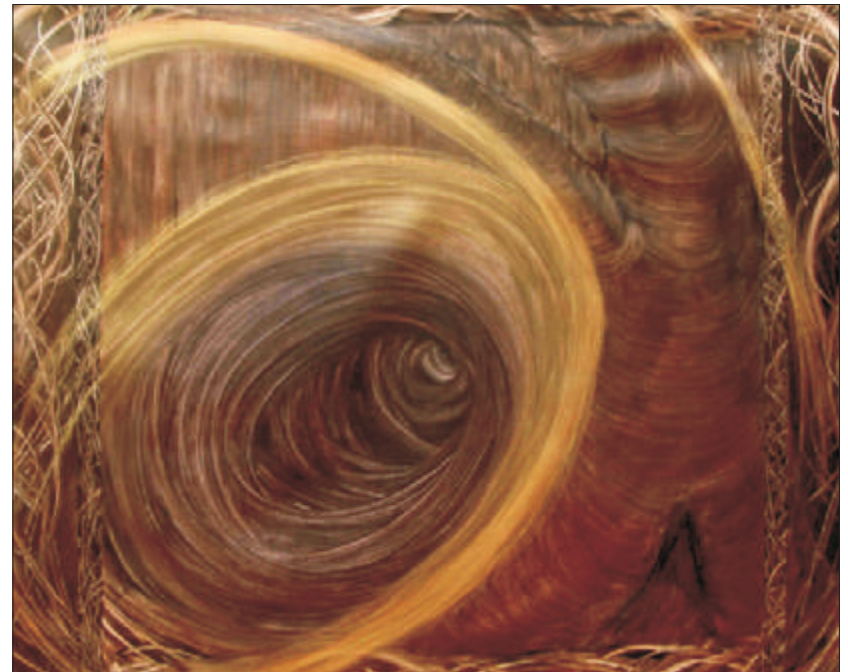
Recent Indian solo exhibits:
Government Museum, Chandigarh, October 2007
Nicholas Roerich Museum Gallery, Naggar, October 2006

Net proceeds from art sale donated to the
US and Indian NGO My Himachal:
www.myhimachal.com • info@himachal.us •

DARK FOREST

घना जंगल

AMERICAN CENTER/US EMBASSY, NEW DELHI, INDIA . 15-25 SEPTEMBER 2009



Dark Forest 4, Oil on canvas, 62x48 inches, 2008

RECENT WORK BY

PAYSON R. STEVENS

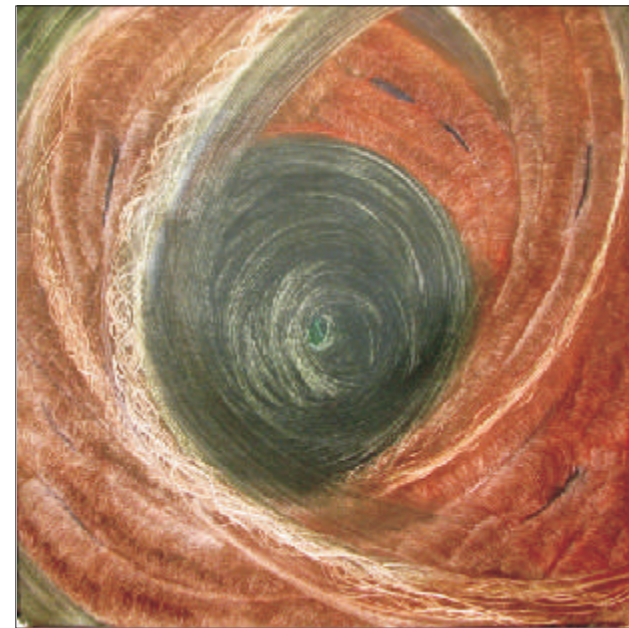
www.energylandscapes.com

Dark Forest focuses on energy flow in the natural world. The viewer is in the undergrowth, the ground level where trunks, thick limbs, branches and vines — all powerful symbols of our unconscious, our DNA, our neural net, and our sinewy bodies—swirl in their interpenetrating dance as they strive for higher levels of illumination. And this quest is the journey into the symbolic dark forest we each carry within.... and then beyond into the clearings ahead, where the light vibrates...drawing us on.



*Dark Forest 3,
Detail (Right)*

Dark Forest 8, Oil on canvas, 42x42 inches, 2008 (Bottom)



*Dark Forest 7,
Oil on canvas,
42x42 inches, 2008*

*Dark Forest Study 2,
Oil on clay paper
16x20 inches, 2008
(Bottom left)*

*Dark Forest Study 4,
Oil on clay paper
16x20 inches, 2008
(Below)*



Payson R. Stevens has been involved in traditional and new media for over 35 years. He has studios in California and India and spends half the year living in a remote valley of the Himalayas with his wife, the writer Kamla K. Kapur. He draws his inspiration from nature and inner, meditative work.

Stevens is trained in both art and science and has traveled extensively from Antarctica to Alaska. He devotes a portion of his time in India helping rural villagers, through the NGO My Himachal, and advising the Great Himalayan National Park.

www.myhimachal.com
www.greathimalayannationalpark.com
www.kamlakkapur.com